



PEUGEOT EXPERT

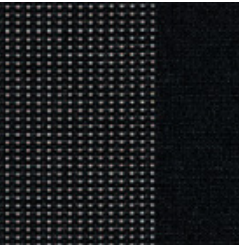
Crew Cab - Pricelist

BASE VEHICLE & POSSIBILITIES

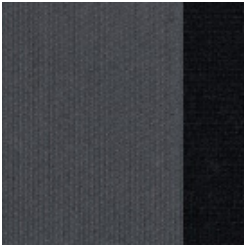
| | L3 ESSENTIAL |
|-----------------------------|-----------------|
| SLIDING DOOR | |
| Sliding door right | o |
| Sliding door left and right | o |
| Sliding door(s) electric | x |
| WINDOWS | |
| Factory fitted windows | o |
| No factory fitted windows | Δ |
| OTHER | |
| Co-driver's seat | o |
| Co-driver's bench | o |
| ROOF HEIGHT | |
| H1 | o |

- o Available
- Δ Available for an additional charge
- x Not available

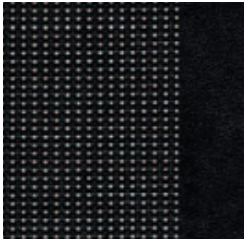
Fabric



Curitiba Triton
Meltem



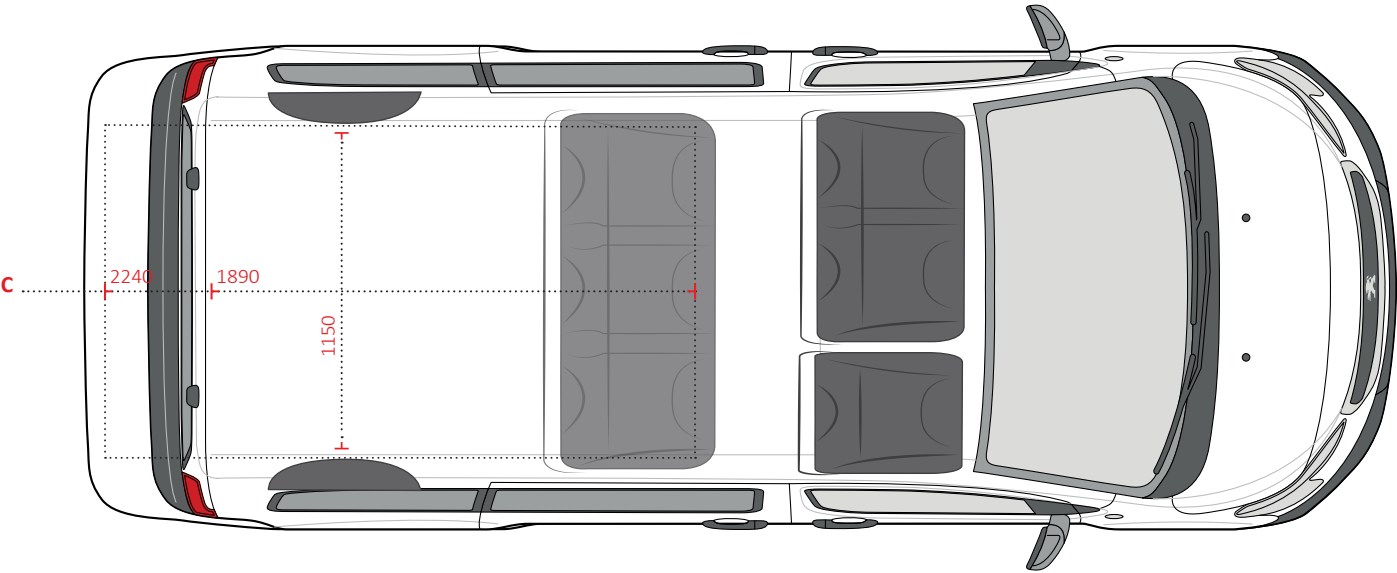
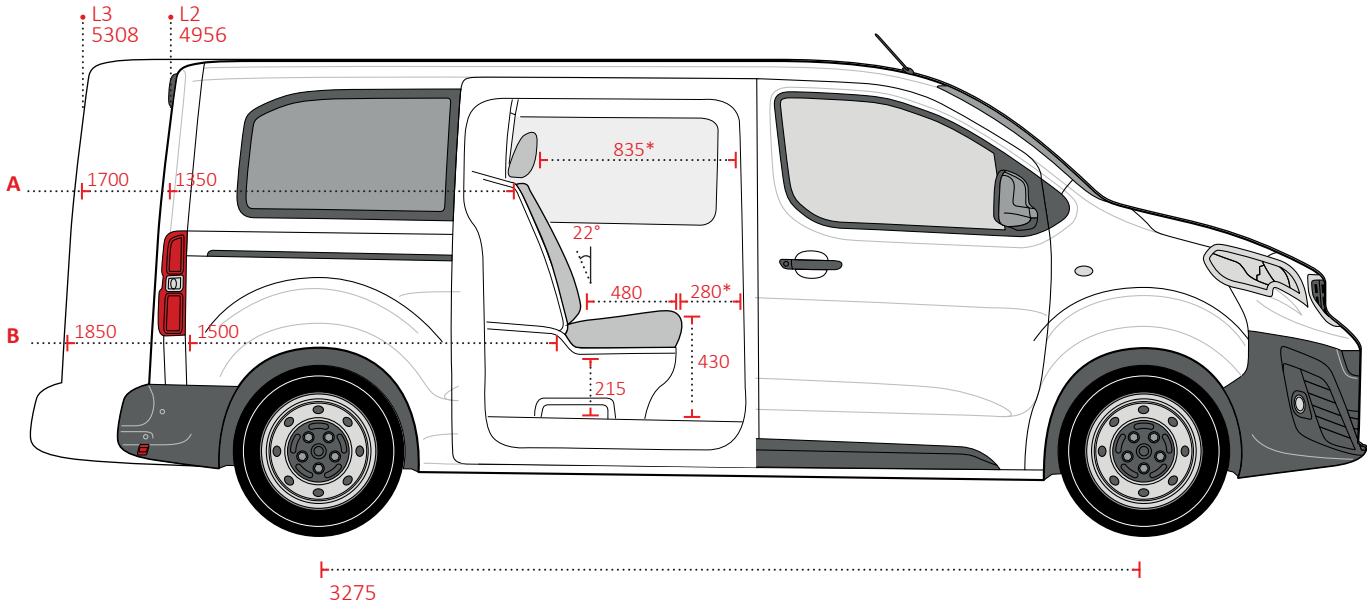
Curitiba
Monoton Bise



Leather - Fabric
Curitiba



Leather



* Measured in relation to fixed co-driver's bench

Note:
Crew cab conversion weight is 105 kg.

| Load area | A | B | C |
|-----------|------|------|------|
| L2 | 1350 | 1500 | 1890 |
| L3 | 1700 | 1850 | 2240 |

STANDARD EQUIPMENT & OPTIONS

Recommended prices 2020 - Peugeot Expert

| | ESSENTIAL |
|--|------------------------|
| BASE VEHICLE | L3 |
| Gross list price H1 | 3100 |
| OBLIGATED EXTRA PRICES | |
| Sliding door left and right | 0 |
| Disassembly separation wall (Note: no B-pillar available) | 45 |
| Adjustments to factory fitted wooden floor) | 50 |
| Adjustments to factory fitted sidewall finishing | 75 |
| WINDOWS | |
| Window left or right (price per piece) | 249 |
| Windows left or right, privacy glass | 625 |
| ABS PARTITION WALL WITH INTEGRATED SAFETY WINDOW | |
| Bench cover with storage pocket, additional load space under the bulkhead | ■ |
| SEATING | |
| 3-Seater contoured bench, covered with cloth as front seats | ■ |
| 3-Seater with two folding seats with storage pocket (position 2 and 3) and two armrests, covered with cloth as front seats | 490 |
| Adjustable head restraints on all seating positions, as front seats | ■ |
| 3-Point inertia-reel safety belt on all seating positions | ■ |
| Protection covers* | 75 |
| FLOOR | |
| Step-in cover plastic, black | ■ |
| Step-on cover left fixed wall with bottle holder | ■ |
| Floor before 2nd seat row, covered with fixed carpet mat | 55 |
| Floor before 2nd seat row, covered with TPO cover | ■ |
| ABS floor trim | ■ |
| | Gross prices excl. VAT |

| | ESSENTIAL |
|--|------------------------|
| SIDE-WALL FINISHING | L3 |
| MDF sidewall finishing, left and right | ■ |
| HEADLINING | |
| Luxury headlining covered with fabric, with factory fitted light | - |
| APPROVAL | |
| Contribution homologation costs | 150 |
| ■ Standard | Gross prices excl. VAT |

Explanation features and options:
Prices only apply in combination with a double cabin kit. Pricing ex-works, a surcharge for single packaging and transport applies.

Please be aware that if a towing hook has to be mounted in the van, this must be done before the installation of the Crew Cab. For further questions, please contact Customer Support +31 (0) 252- 629 529.

Please note: Transport is not included in price.

* Only available in combination with 3 adjustable seats